

# Bridgeport

*Fabrics by Jo Morton*



Finished size: 65½" x 80½"

## *A Box of Chocolates*

Quilt designed and made by Candy Hargrove

Quilted by Maggi Honeyman



**makower uk**

1384 Broadway  
New York, NY 10018  
(800) 223-5678

[www.andoverfabrics.com](http://www.andoverfabrics.com)

# A Box of Chocolates Quilt

Introducing Andover Fabrics new collection: Bridgeport by Jo Morton  
Quilt designed and made by Candy Hargrove, quilted by Maggi Honeyman

Quilt finishes 65½" x 80½"

32 Block Y: 7½"

31 Block Z: 7½"

*Steeped in the tradition of our quilting foremothers, this scrappy quilt will bring a feeling of comfort and home to all who see it. The two-block design uses three fabric lines in a planned way that is controlled yet scrappy. Quick methods to piece the little triangles make the work easy for anyone with some sewing experience.*

## Fabric Requirements

			Yardage		
<b>Fabric A</b>	<b>blocks, border</b>		2⅛ yards	<b>5601-K</b>	
<b>Fabric B</b>	<b>blocks, border</b>		½ yard	<b>5604-N</b>	
<b>Fabric C</b>	<b>blocks, binding</b>		¾ yard	<b>5607-K</b>	
<b>Fabric D</b>	<b>blocks, backing</b>		5 yards	<b>5603-N</b>	
<b>Fat ¼ Prints:</b>	<b>blocks</b>		fat ¼ yard each		
<b>5087-KN</b>	<b>5600-N</b>	<b>5600-R</b>	<b>5601-N</b>	<b>5601-R</b>	<b>5602-K</b>
<b>5602-N</b>	<b>5602-R</b>	<b>5603-K</b>	<b>5603-R</b>	<b>5604-K</b>	<b>5604-R</b>
<b>5605-K</b>	<b>5605-N</b>	<b>5605-R</b>	<b>5606-N</b>	<b>5606-R</b>	<b>5607-R</b>
<b>5608-K</b>	<b>5608-N</b>	<b>5609-K</b>	<b>5609-R</b>	<b>5610-N</b>	<b>5610-R</b>
<b>5082-N</b>	<b>5082-R</b>	<b>5083-N</b>	<b>5084-N</b>	<b>5085-N</b>	<b>5086-K</b>
<b>5086-N</b>	<b>5087-K</b>	<b>3094-LN</b>	<b>3094-O</b>	<b>3094-DN</b>	<b>3094-NN</b>

## Cutting Directions

**Note: Read Step 1 before cutting patches.** All measurements are cut sizes and include ¼" seam allowances. A fat ¼th is an 18" x 20"-22" cut. Borders are cut the exact lengths required plus ¼" seam allowances. WOF designates the width of fabric from selvedge to selvedge (approximately 42" wide).

**Fabric A** Cut (2) borders 5½" x 71", cut lengthwise  
Cut (2) borders 5½" x 66", cut lengthwise

**Fabric B** Cut (2) borders 2" x 68", cut crosswise and pieced  
Cut (2) borders 2" x 56", cut crosswise and pieced

**Fabric C** Cut (8) strips 2½" x WOF for binding

**Fabric D** Cut (2) panels 37" x 89", pieced to fit quilt top with overlap on all sides

**For ONE Block Y – Attic Shirtings fabrics**  
(5082-N, 5082-R, 5083-N, 5084-N, 5085-N, 5086-K, 5086-N, 5087-K):

Cut (1) square 3¾" x 3¾", cut in half diagonally twice to make 4 quarter-square triangles

(4) rectangles 1¾" x 3"

(4) squares 2⅛" x 2⅛" for HST piecing

### Bridgeport fabrics

(5087-KN, 5600-N, 5600-R, 5601-K, 5601-N, 5601-R, 5602-K, 5602-N, 5602-R, 5603-K, 5603-N, 5603-R, 5604-K, 5604-N, 5604-R, 5605-K, 5605-N, 5605-R, 5606-N, 5606-R, 5607-K, 5607-R, 5608-K, 5608-N, 5609-K, 5609-R, 5610-N, 5610-R)

Cut (2) squares 3⅜" x 3⅜", cut in half diagonally to make 4 half-square triangles

Cut (1) square 3" x 3"

Cut (4) squares 2⅛" x 2⅛" for HST piecing

Cut (4) squares 1¾" x 1¾"

### For ONE Block Z

#### Simple Charm fabrics

(3094-LN, 3094-O, 3094-DN, 3094-NN):

Cut (1) square 5½" x 5½"

#### Bridgeport Fabrics (see above)

Cut (2) squares 5" x 5", cut in half diagonally to make 4 half-square triangles

# A Box of Chocolates Quilt

## Making and Assembling the Quilt

1. The Attic Shirtings are used for the background patches in 32 Block Y. From each of the 8 prints, cut patches for 4 Block Y. From each of 24 Bridgeport fabrics, cut foreground patches for 1 Block Y. From each of 4 Bridgeport fabrics, cut patches for 2 Block Y. Set aside.

For Block Z, from each of 3 Simple Charm fabrics, cut center  $5\frac{1}{2}$ " squares for 8 blocks. From 1 Simple Charm fabric, cut center  $5\frac{1}{2}$ " squares for 7 blocks. From each of 25 Bridgeport fabrics, cut a 5" square for 1 Block Z. From each of 3 Bridgeport fabrics, cut 5" squares for 2 Block Z. Cut 5" squares in half diagonally to make triangles. Set aside.

2. The Y blocks use half-square triangles (HST) that finish  $1\frac{1}{4}$ " square. Use your favorite method to make HST, or follow these directions. Draw a diagonal line on the wrong side of each Attic Shirtings  $2\frac{1}{8}$ " square (Diagram 1). Place a marked square on a Bridgeport fabric  $2\frac{1}{8}$ " square, right sides together. Sew  $\frac{1}{4}$ " seam on each side of the marked line; cut apart on the marked line. Press open to make pieced HST. Make 8 HST for each Block Y.

Referring to the Block Y diagram, sew HST to ends of an Attic Shirtings  $1\frac{3}{4}$ " x 3" rectangle. Repeat to make 4 units like this. Sew a Bridgeport  $1\frac{3}{4}$ " square to the ends of 2 of the units.

Sew Attic Shirtings  $3\frac{3}{4}$ " quarter-square triangles to the sides of a Bridgeport Fabric 3" square. Sew Bridgeport  $3\frac{3}{8}$ " half-square triangles to the sides. Sew shorter pieced HST units to the sides, and sew longer pieced units to the top and bottom. Make a total of 32 Block Y like this.

3. Referring to the Block Z diagram, sew Bridgeport fabric 5" half-square triangles to the sides of a Bridgeport fabric  $5\frac{1}{2}$ " square. Note that the triangles are cut over-size. Trim the block to an 8" square (this measurement includes seam allowances), being careful to trim the same amount from each side. The center square "floats" in the block. Make 31 Block Z like this.
4. Referring to the Quilt Diagram, join 4 Block Y and 3 Block Z alternately to make a horizontal row. Press the seam allowances toward the Block Z's. Make 5 rows. Join 4 Block Z and 3 Block Y to make a row. Press seam allowances toward Block Z's. Make 4 rows like this. Join the rows, alternating types.
5. Sew long Fabric B borders to the sides and short borders to the top and bottom. Repeat with Fabric A borders.

## Finishing the Quilt

6. Layer the quilt with batting and backing and baste. Quilt in the ditch around borders and block patches. Quilt around the printed motifs in the center square in each Block Z. Bind to finish the quilt.

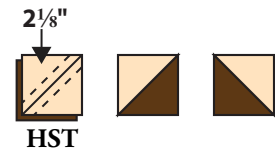
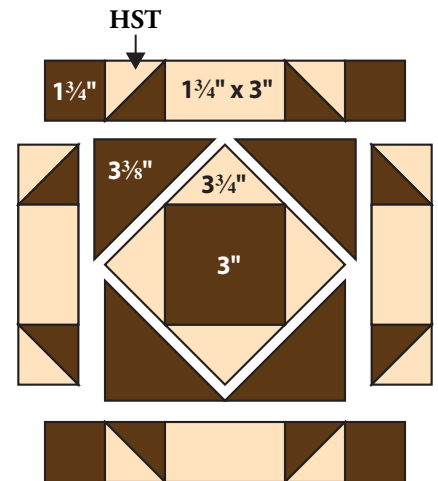
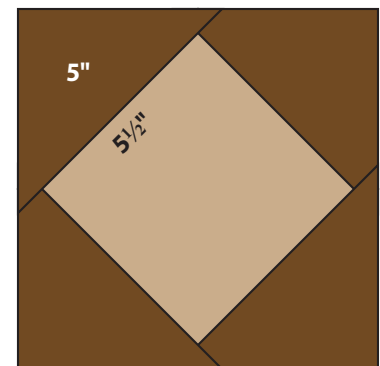


Diagram 1



Block Y Make 32



Block Z Make 31

# A Box of Chocolates Quilt



Quilt Diagram



# Bridgeport *Fabrics by* Jo Morton

*Fabrics shown are 25% of actual size. All fabrics used in quilt pattern.*



5600-N



5600-R



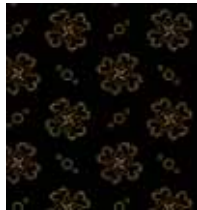
5601-K 2 1/8 yds



5601-N



5601-R



5602-K



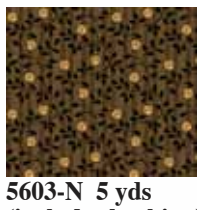
5602-N



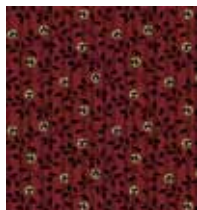
5602-R



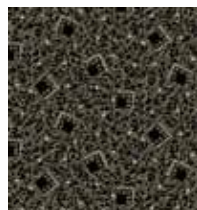
5603-K



5603-N 5 yds  
(includes backing)



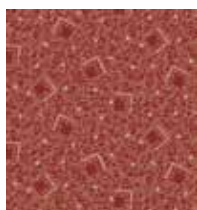
5603-R



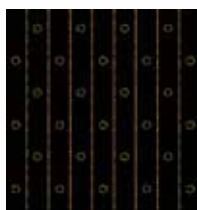
5604-K



5604-N 1/2 yd



5604-R



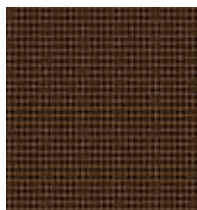
5605-K



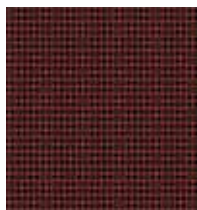
5605-N



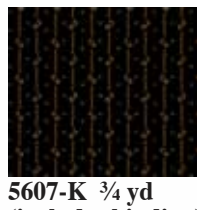
5605-R



5606-N



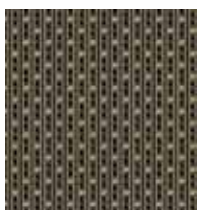
5606-R



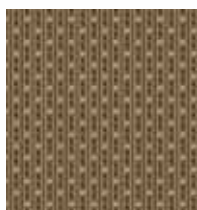
5607-K 3/4 yd  
(includes binding)



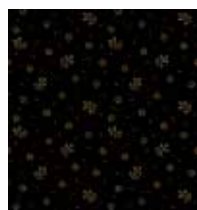
5607-R



5608-K



5608-N



5609-K



5609-R



5610-N



5610-R



5087-KN

## Bolts needed to cut project kits

	10 kits	20 kits	30 kits
5601-K	2	3	5
5604-N	1	1	1
5607-K	1	1	2
Fat 1/4 fabrics:	1	1	1
5087-KN	5600-N	5600-R	5601-N
5601-R	5602-K	5602-N	5602-R
5603-K	5603-R	5604-K	5604-R
5605-K	5605-N	5605-R	5606-N
5606-R	5607-R	5608-K	5608-N
5609-K	5609-R	5610-N	5610-R
5082-N	5082-R	5083-N	5084-N
5085-N	5086-K	5086-N	5087-K
3094-LN	3094-O	3094-DN	3094-NN

## Backing Fabric

\*5603-N 4 7 10

\*Yardage needed for backing (5 yards per kit)

## Also by Jo Morton

### SIMPLE CHARM



3094-LN



3094-O



3094-DN



3094-NN

### ATTIC SHIRTINGS



5082-N



5082-R



5083-N



5084-N



5085-N



5086-K



5086-N



5087-K



# BRIDGEPORT

by Jo Morton



makower uk®

Also by Jo Morton

## SIMPLE CHARM



5600-N



5600-K



5601-K



5601-N



3094-LN



5601-R



5602-K



5602-N



5602-R



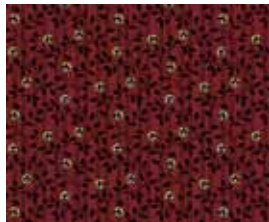
3094-O



5603-K



5603-N



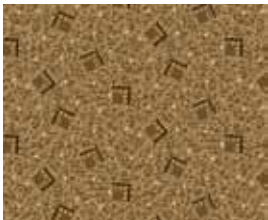
5603-R



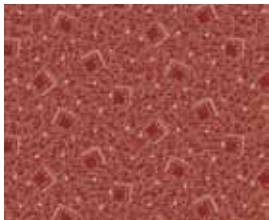
5604-K



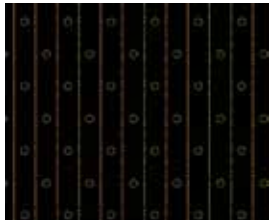
3094-DN



5604-N



5604-R



5605-K



5605-N



3094-NN

## ATTIC SHIRTINGS



5605-R



5606-N



5606-R



5607-K



5082-N



5082-R



5607-R



5608-K



5608-N



5609-K



5083-N



5084-N



5609-N



5610-R



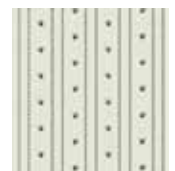
5610-N



5087-KN



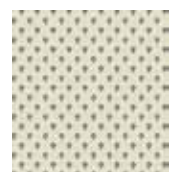
5085-N



5086-K



5086-N



5087-K